

Interviewing and Field Visit Prep Tips

- Moni Muraki, DIS
- Seattle & King County Public Health
- Tuberculosis Control Program



Goals of the TB interview

- ID pts at high risk for progression to disease
- ID Latent TB Individuals
- ID Source Cases
- ID Secondary Cases



How to get there

- Establish Rapport
- Provide education and context for contact tracing
- Work in partnership with pt for contact tracing
- Identify contacts



Establishing Rapport



- Introduce yourself and purpose of your involvement in the pt's care.
- What does the pt understand about their dx?
- Where do they think they got TB?
- What are the pt's concerns.
- Summarize pt's concerns.

Isolation and Location Before the actual interview

- List sites and ask how difficult it would be to abstain from visiting these places and or engaging in these activities.
 - Places of worship
 - Social activities
 - Volunteer locations
 - School
 - Work
 - Family



Isolation



Public Transportation



Airplane



School



Baby under 6 Months Old



Shopping at Stores



Work



Place of Worship



People with Severely Weakened Immune System



Restaurant or Other Indoor Places



Location Prompts

Typical Day

- If the pt denies engaging in any activities, ask them to describe a typical weekday and then a typical weekend.



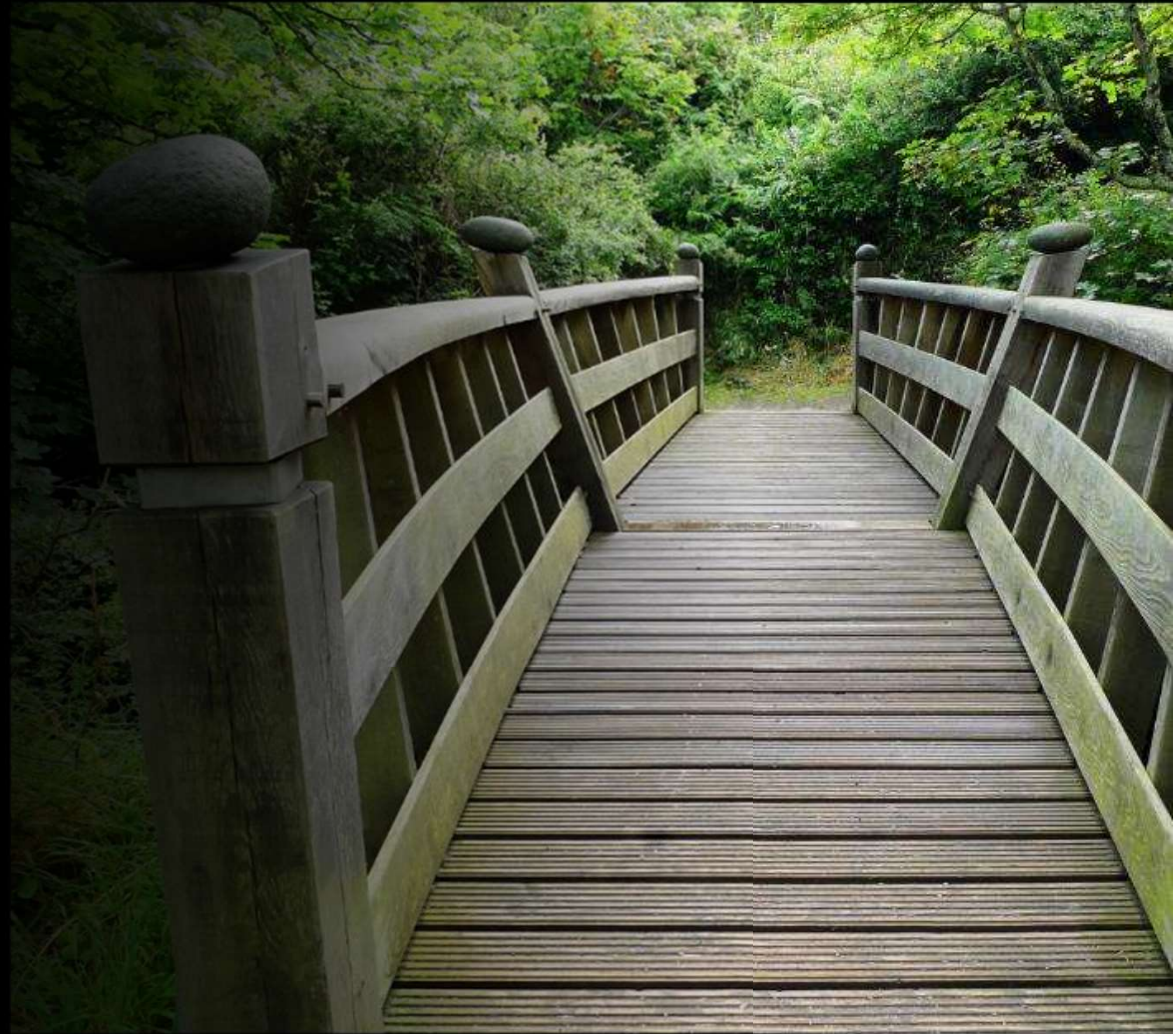


Pulling it together

- At this point, hopefully you have some understanding of:
 - What motivates your pt
 - What their concerns are
 - Where they spend their time
 - What a typical day looks like for them

Transition

- Reflect on:
 - Your conversation regarding transmission
 - Your pt's missed opportunity to be tested for TB after they became infected.
 - How the pt shared with you the difficulties of having TB



Start your interview

- Confidentiality
- You may also want to share the process on how people get notified

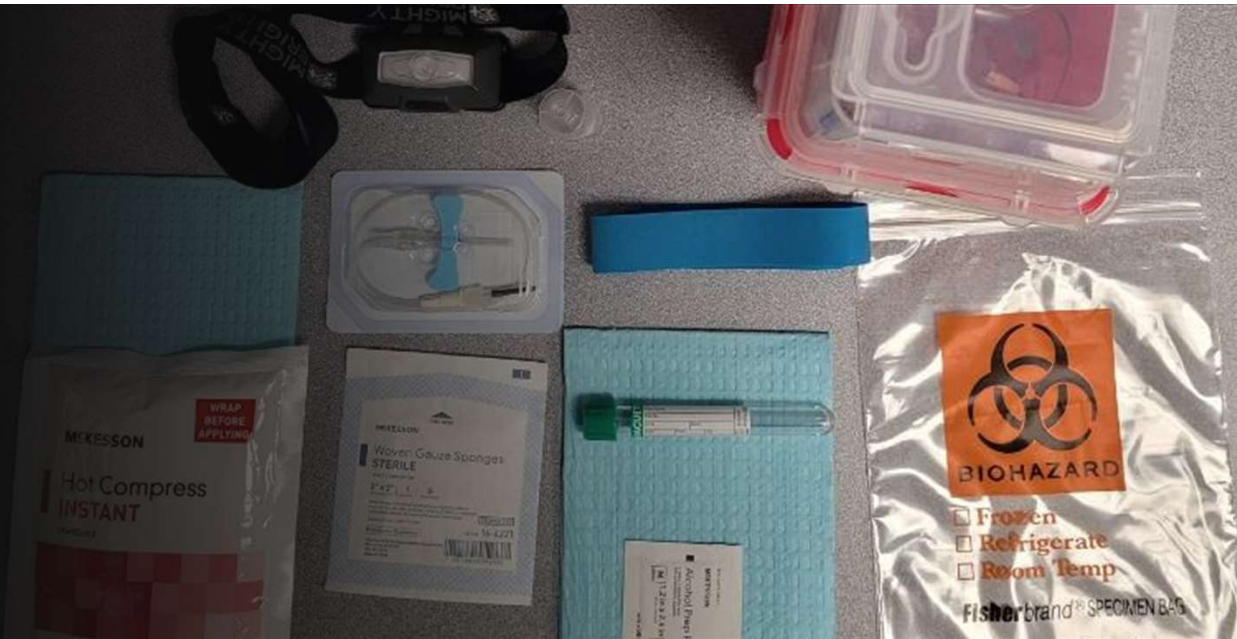


Because we all get nervous

- Don't speak too fast.
- Avoid asking leading questions such as:
 - You don't know anyone who is coughing do you?
 - You don't go to casinos, do you?
- Try to ask open ended questions
- Thank the pt for their time
- Keep your interview open ended

To be
continued...

Bring it!!!

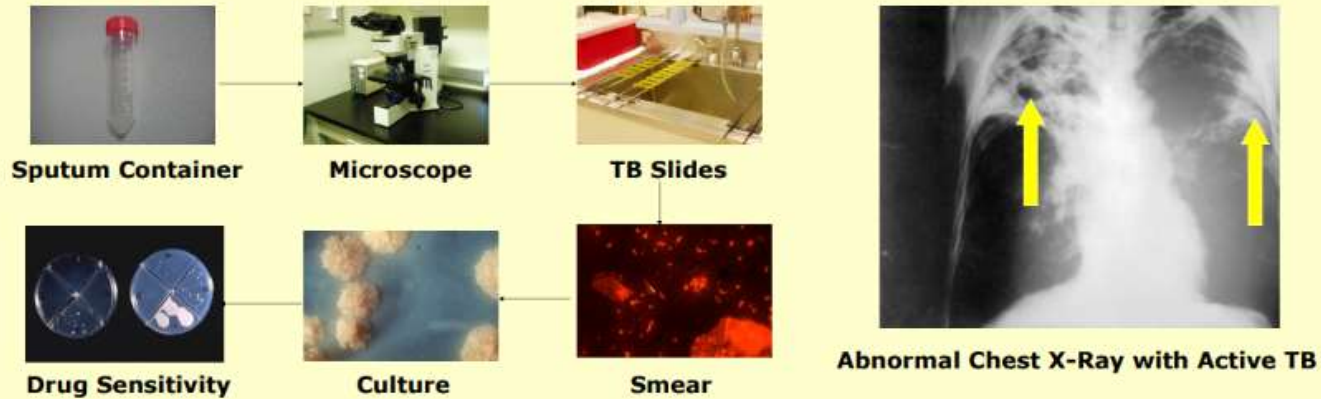


Pack your bag





My field partner



Isolation



Public Transportation



Airplane



School



**Place of
Worship**



**Baby under 6
Months Old**



**Shopping
at Stores**



Work



**People with
Severely Weakened
Immune System**



**Restaurant or
Other Indoor
Places**



**Social
Gathering**



**Always Wear a Mask Indoors
Except in Your Home**



Guests

Mostly Used TB Medications



Rifampin (RIF)

+



Isoniazid (INH)

=



IsonaRif



Rifabutin



Pyrazinamide (PZA)



Ethambutol (EMB)



Pyridoxine (Vitamin B6)

Other TB Medications



Levofloxacin



Moxifloxacin



Streptomycin



Amikacin



Capreomycin



Rifapentine



Ethionamide



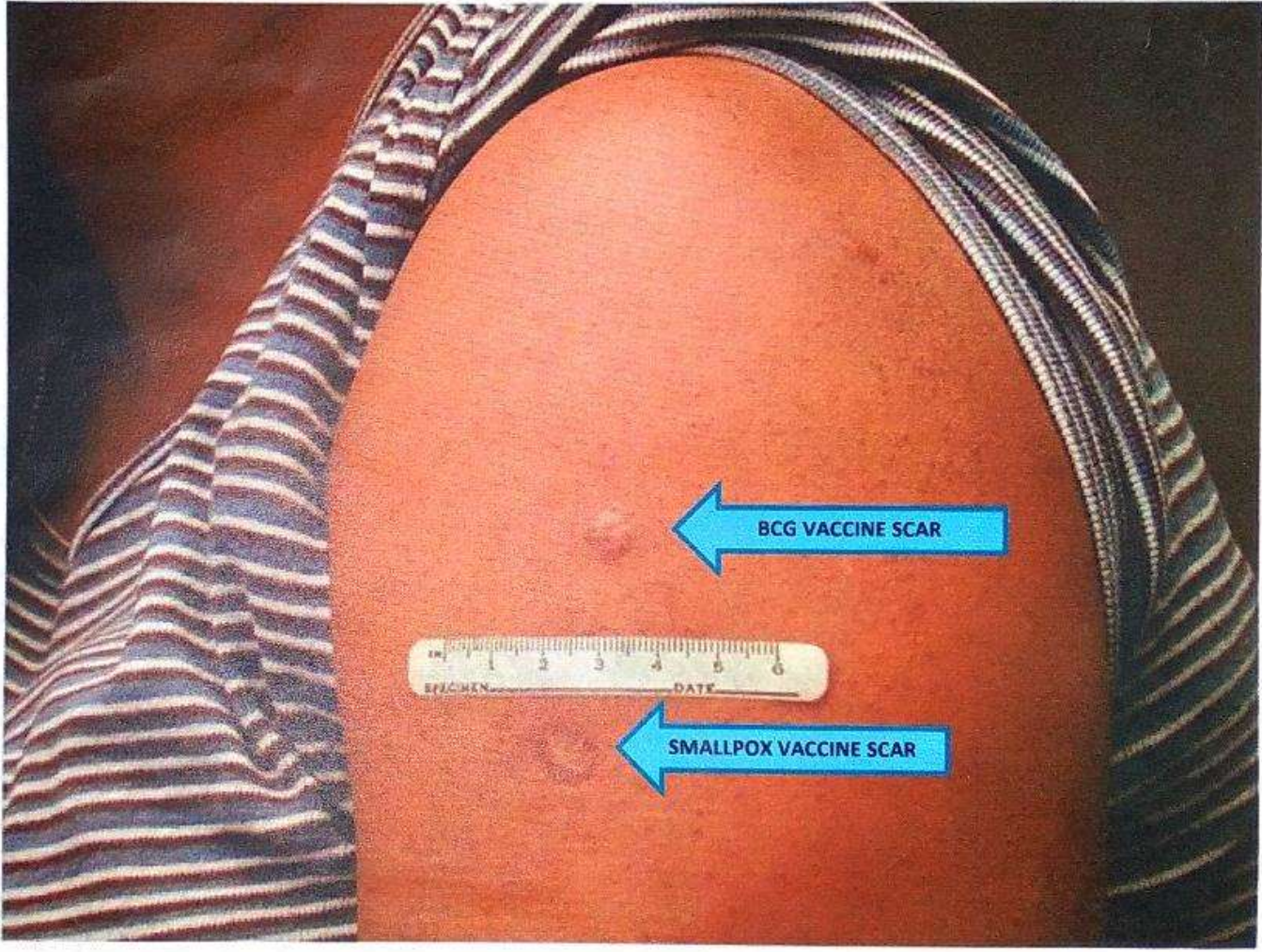
Rifater



Cycloserine



P-Aminosalicylic Acid



BCG VACCINE SCAR

SMALLPOX VACCINE SCAR

